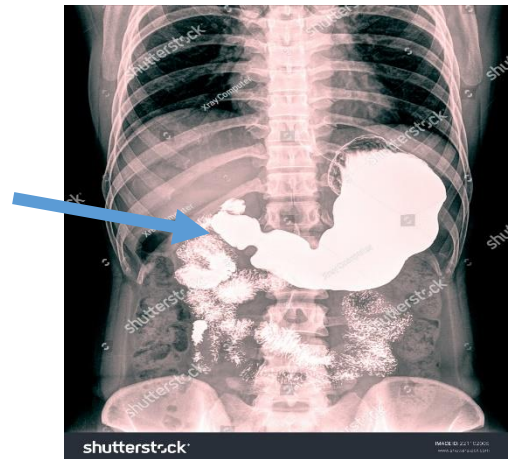


## DR 2017

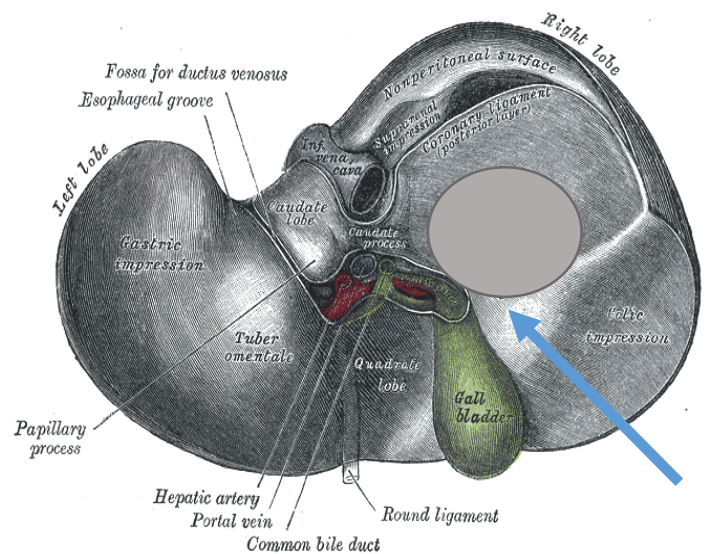
1)The pointed structure is

- a- Stomach
- b- antrum
- c-Duodenal cap



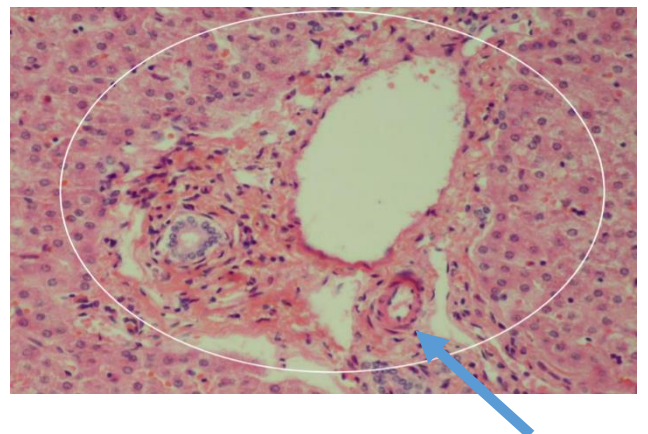
2)The pointed impression is :-

- a- stomach
- b- duodenal
- c-renal



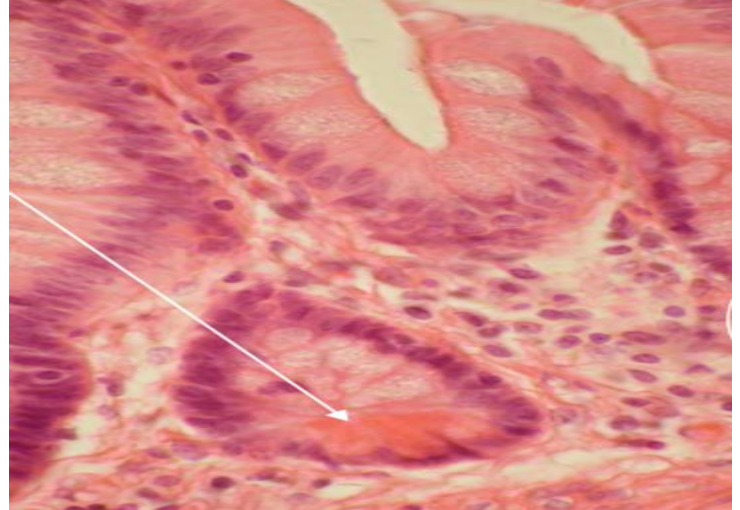
3)The pointed structure

- a-portal triad
- b- portal vein
- c-bile duct
- d- hepatic artery



4) the pointed cells are ?

- a-paneth cells                      b-crypt of lieberkuhn
- c-goblet cells



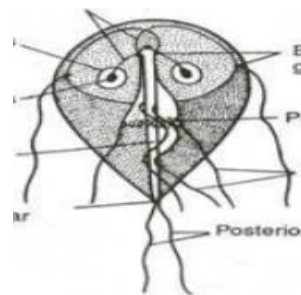
5) Pic on the esophagus (histo)      مش متذكرر الصووورة بالمرة, بس كانت صورة مباشرة وحدد العضو

6) The bacteria that produces H<sub>2</sub>S and gives red on the top and yellow on the button (don't ferment lactose and ferment glucose):-

- a-shigella                              b-proteus
- c-cholera                              d-none of the above

7) the Pic represents?

- a-entameoba coli                      b-entameoba histoltica
- c-giardia lamblia



8) T.C.B.S media is used with?

- a-vibrio parahaemolyticus                      b- vibrio cholera                      c-shigella

9) adding Ach in an experiment?

- a-increases tonic contraction                      b-decreases tonic
- c-increases phasic contraction                      d- b+c

**10) Right about metabolic rate?**

a-co<sub>2</sub> is used in indirect calorimetry

b-MR is increased with sympathetic

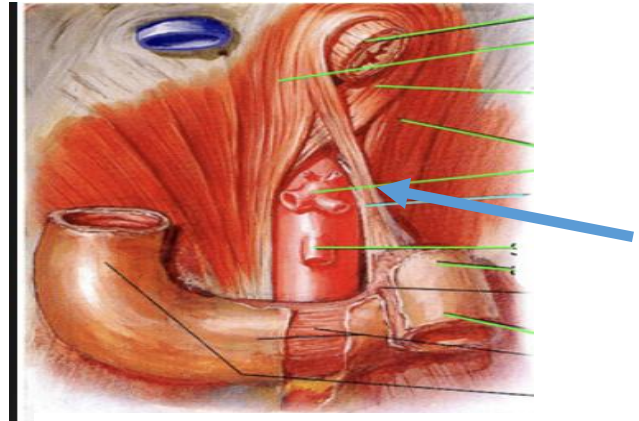
c-cold weather increases MR

**11) the pointed ligament is**

a) gastrosplenic

b) splenorenal

c) ligament of trauitz



**12) which of the following muscles is not inserted in the pic**

a-genioglossus

b-temporalis

c-medial pterygoid

d-lateral pterygoid



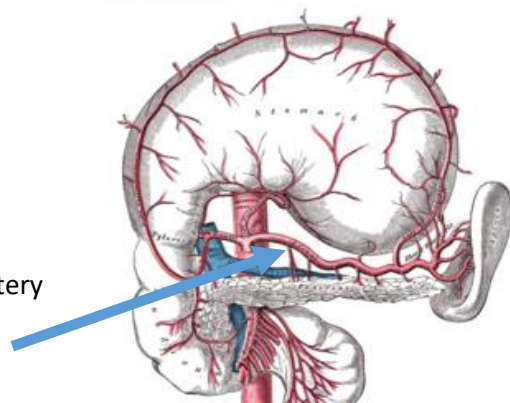
**13) the pointed artery is Pic**

a-celiac artery

b-splenic artery

c-superior pancreaticoduodenal artery

d-gastroduodenal artery



**14) the following structure contains all of the following except**

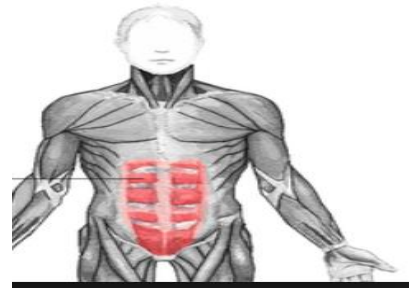
a-lower 6 costal arteries

b-superior epigastric artery

c-pyramidalis muscle

d-inferior epigastric artery

e-iliohypogastric nerve





15) the following manifestation appears in

- a-gastric ulcer                      b-crohn disease
- c-ulcerative colitis



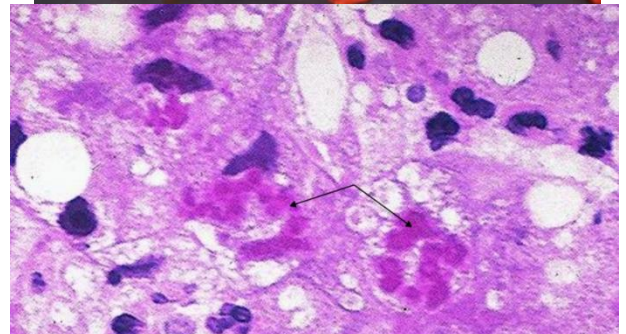
16) a 40 years old patient with hematemesis and other manifestations with this pic, what is the right diagnose ?

- a-atresia                                      b- esophageal varices
- c-gastric cancer                              d-achalasia



17) the following deposited things are ?

- a-proteins                                      b-cytoskeleton
- c-iron    d- copper



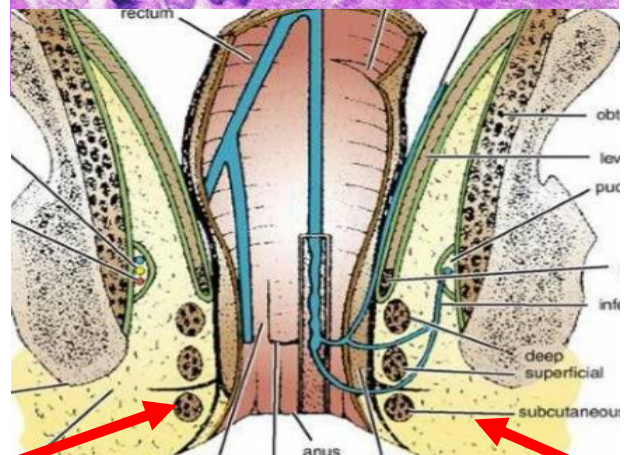
تم ذكرها بالسؤال MALOORY HYALINE يمكن كلمة

18

ناسي شو السؤال بالزبط (الرسمه 100% اجت مع السهمين) بس كان بده شو اللي موجود بهاي المنقطة

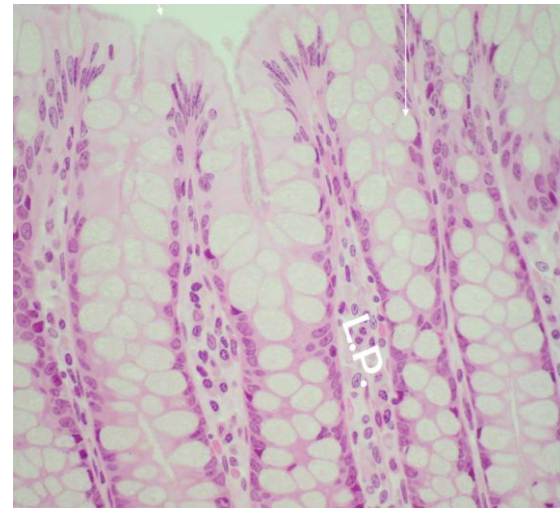
الجواب اكيد

inferior rectal artery



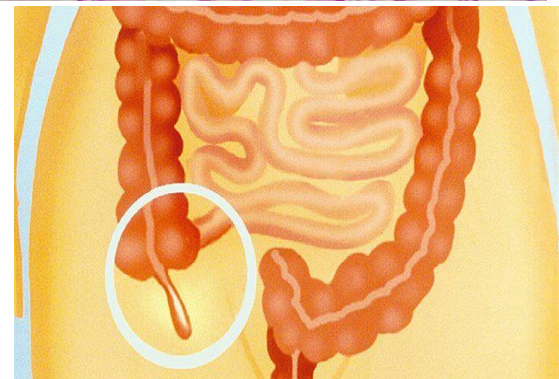
19)the type of the gland in the picture ?

- a-simple tubular
- b-branched tubular
- c-tubuloaciner coiled



20) choose the wrong about the circled structure

- a-it is part of the mid gut
- b-it is supplied by inferior mesenteric artery
- c-it has no tenia coli



1	2	3	4	5	6	7	8	9	10
C	B	D	A	☹	D	C	B	A	A

11	12	13	14	15	16	17	18	19	20
E	A	C	E	B	B	B	☹	B	B

**1)Wrong that parotid gland**

a-tubuloveolar with serous demilune

**2)somone with Incontinence that can't control his defecation because problem in analrectal junction, which of the following is damaged**

- a-internal anal sphincter                      b-superficial external anal sphincter
- c-deep external anal sphincter            d-subcutaneous external anal sphincter

**3) all of the following innervate the pharynx except**

- a-external laryngeal                      b-internal laryngeal                      c-glossopharyngeal nerve

**4) right about starvation**

- a-fat is depleted fast                      b-protein is in the decreased phase 2-3 weeks
- c-glucose is depleted slow            d-MR is low after a while

**5) which of the following is not Absorbed by secondary active transport at the luminal side**

- a-tri peptide                      b-fructose                      c-glucose                      d-galactose

**6) very long question of someone infected by food from a restaurant with watery diarrhea and slight increase in temperature you advise him to do all the following except**

- a-to stay at home                      b-take pain reliever                      c-take anti body                      d-proper hygiene

**7) norovirus do all the following except**

- a-cell death                      b-atrophy of microvilli                      c-villi borden                      d-death of enterocyte

**8) clue on active replicative of HBV**

- a-HBcAg                      b- HBeAg                      c-IgM anti HBe                      d- IgG anti HBe

**9) Clue on resolution of acute HBV**

- a- IgG anti HBe                      b- anti HBe IgM                      c-anti HBs

**10) Most sensitive for HCV detection**

a-HBC RNA by PCR

b-DNA by TMA

c- anti HCV

**11)wrong about schistosoma**

a-bad effects are due to eggs unlike other worms

b-women are shorter and wider than men

c-it could be related to urinary diseases

**12)Disease resulting in flask-shaped ulcerations in the intestine.**

a-Entamoeba histolytica

b-Giardia Duodenalis

c-Cryptosporidium

d-Ascaris Lumbricoides

**13)wrong about Brucellae**

a-it is obligate intracellular

b-Brucellosis may be acquired by ingestion, inhalation, mucosal or percutaneous exposure

c- it takes long time to grow in culture chronic

d-sth about it starts acute then becomes chronic

**14)wrong about Ascaris lumbricalis**

a-humoid is needed to become infective

b-transmitted by feco oral

c-has mamillated eggs

d- it causes loeffler syndrome in lungs

**15)which of the following is Oxidase positive and grows on CIN agar with gives ball eye appearance**

a-campylobacter jejuni

b-aeromonas hydrophilic

c-yersinia

**16)Wrong about IBD drugs**

a-cortico steroids are not used to maintenance

b-methotrexate is used for induction in crohns disease

c-Azathiopirine is used for induction of UC

**\*\*Matching 17-21\*\***

**17)lactulose**

**18)Glucocortico**

**19)Anthraquinone**

**20)Castor oil**

**21) corticosteroid**

a-precipitate and causes ulcers

b- laxative in large intestine

c- osmotic laxative

d- laxative in small intestine

e-peptic ulcer

**22)Most potent drug for HBV**

a-Entacavir

b-adefovir

c-tenofovir

d-telbivudine

**23)drug of choice in Cisplatin(chemotherapy) for emesis ?**

a- tropisetron

b- domperidone

c-Ondasetron

**24)Anti diarrheal drug**

a-Loperamide

b-mineral oil

c-tropisetron

**25)Genetic mutation associated with familial adenomatous polyposis**

a-beta catenin

b-E cadherin

c-APC gene

**26)Which of the following isnt a risk factor of gall bladder cancer;**

a-Female

b-gender

c-Paristic infection

d-Inflammation of liver

**27) Most common malignancy of the liver**

a-Hepatocellular carcinoma

b-metastatic tumors

c-adenocarcinoma

**28) Wrong about common bile duct**

a-bile and pancreatic ducts are independent on each other at their opening

b-bile duct is anterior to duodenum

**29) Is not associated with chronic liver disease**

a-portal hypertension

b-cirrhosis

c-testicular hypertrophy



**30)not involved in pudental canal:-**

a-superior rectal vessels

b-internal pudental artery

c-pudental nerve

**31) Wrong about h. Pylori - increases risk of carcinoma of the esophagus**

**32) Wilson disease by cu accumulation is caused by ?**

a-increased absorbtion from renal

c-decreased absorbtion from hepatic

c-decreased excretion from renal

d- increase absorbtion from hepatic

**33) one of the following conditions isnt associated with finger clubbing**

a-pneumonia

b-IBD

c-cirrhosis

d-bronchas.....

**34)a person with transplant bone marrow, one of the complication**

a- Veno-occlusive disease

b- Peliosis Hepatis

**35) Thrombotic occlusion caused by all except**

a-cardiac failure

b-pregnancy

c-oral contraceptive

d-malignancy

**36) Wrong abut diss space of hepatocyte**

that hepatocyte has direct connection with blood

**37) Ascities with behavior change in child**

a-cooper or Wilson

b-hemochromatin

**38) all of the following are posterior to rectum except**

a-median sacral

b-internal iliac vein

c-sympathetic trunk

d-sacral plexus

**39) Chronic gastritis is caused by**

a-h pylori

b-NSAID

c-a+b

**40) AN NS5A non structural drug that is used in hepatitis C**

a-boceprevir                      b-sofosbuvir                      c- Ombitasvir

**41) which of the following is not between Mylohyoid and hyoglossus ?**

a-hypoglossal nerve                      b-nerve to mylohyoid

**42)lower part of anal canal is from (embryology)?**

a-endoderm                      b-proectoderm                      c-urorectal septum

**43) fibrosis of the hepatic duct and cholestasis, whats is most likely in the blood test?**

a- alkaline phosphatase

**44) A woman with Inflammatory bowel disease and hepatitis like symptoms with no viral load, whats elevated in her blood**

a- Antimitochondrial antibodies                      b-antinuclear cytoplasmic antibodies  
c-anti pyruvate dehydrogenase

**45) What is not likely to be felt during rectal examination**

A)Vas difference                      b)Cancer nodule in the Peritoneum  
c)Prostate                      d)A stone in the ureter

**46)wrong about inferior mesenteric artery:-** that its branches are posterior to ureter

**47)Which of the following is not affected in portal hypertension**

a)left gastric                      b)splenic vein                      c-epigastric veins

**48)wrong ABOUT IVC**

a-right renal artery is anterior to IVC                      b-left renal vein crosses anterior of aorta  
c-IVC is formed by two common iliac veins in front of common iliac arteries

#### 49)Wrong about esophagus deformation

a-the most common from is proximal atresia and distal fistula

b-is can cause pneumonia

c-it can cause oligohydration

d-it can cause renal agenesis

#### 50)wrong about sigmoid colon

Parasympathetic from vagus

#### 51)Worng about coils rotation ?

both rotation of the coils happens after sth EMBRYO ssth like that (sorry)

1	2	3	4	5	6	7	8	9	10	11	12	13	14	15	16	17
☺	c	b	D	a	b	b	b	c	a	b	a	c	a	b	c	c

18	19	20	21	22	23	24	25	26	27	28	29	30	31	32	33	34
a	b	d	E	a	c	a	c	c	b	b	c	a	☺	d	Maybe c	a

35	36	37	38	39	40	41	42	43	44	45	46	47	48	49	50	51
a	☺	a	B	c	c	b	b	☺	b	b	☺	b	a	c	☺	☺

سؤال 28 كان مضحك والجوابين بزيطوا بس الدكتور اعتمد الخيار بي  
مش متأكدين 100% من بقية اجابات خصوصا الباثو بس الاسئلة وافكارها كلهم اجوا  
☹ الباثو كان تفجير

ادعوووا لصاحب الملف